

# Big Green Egg®

*WORLD'S BEST SMOKER AND GRILL*

*2002 Product & Accessories Catalog*



# THE BIG GREEN EGG®

THE WORLD'S BEST SMOKER AND GRILL



- A. **Large** 140 lbs, 18.25" grid
- B. **Medium** 95 lbs, 15" grid
- C. **Small** 65 lbs, 13" grid

- D. **Mini** 30 lbs, 9.5" grid
- E. **Egg Mate**
- F. **Egg Nest**

The *new*, **Big Green Egg**® is the most versatile and effective outdoor cooker ever designed for smoking, grilling, roasting and baking all kinds of food. The Egg's ceramics will withstand temperatures from sub-zero to more than 2000°F without damage in any weather.

The **Big Green Egg**® is without equal as a grill or smoker. For high temperature searing, low temperature smoking and cooking, or even brick-oven baking, the Egg does it all. It will replace any combination of grills or cookers you have, including your oven.

# Egg-Cessories for the World's Best Smoker and Grill



The World's Best Smoker and Grill, shown outfitted with some of our most popular Egg-Cessories. BGE crafted tables are available in two different lengths, in pine or cypress, with or without wheels. Big Green Egg® Natural Lump Charcoal ignites quickly, without "lighter fluid taste" using the BGE Electric Lighter, or BGE Natural Fire Starters. BGE charcoal will cook longer, contains no fillers, and produces less ash than briquette charcoal. Our BGE Ceramic Baking Stones produces pizza and bread and other baked goods like those from an authentic brick oven.

*Please note, the Egg in these photos illustrates our new stainless-steel draft door and hinge improvements. These are a result of continuing development of Big Green Egg technology.*

## The "Egg" Grows "Wings"

The Egg is available with our sturdy Egg Nest and Egg Mate, affording more versatility and mobility. Our new improved Spring Assisted Band makes opening and closing the lid easier, safer, and can be operated with just one hand. The Dual-Function Metal Top and External Temperature Gauge permit very accurate temperature control. Our assortment of racks, roasters, fish grids, and wood chips give the BGE everything needed for an endless variety of incomparable cookouts! The Big Green Egg® demonstrates with each cookout that it is indeed the World's Best Smoker and Grill. The following pages illustrate the variety of BGE items available to make the BGE cooking experience easier and even more delightful.



MODEL	EGG NEST	EGG MATE
LARGE	ENL	EML
MEDIUM	ENM	EMM
SMALL	ENS	N/A
MINI	N/A	N/A



# EGG-CESSORIES



## Long Table

**Y5TAB** Large 58 inches long  
**Y3TAB** Medium 58 inches long  
**Y5TAB4** Large with wheels  
**Y3TAB4** Medium with wheels

**NEW!** Available in cypress.



## Compact Table

**Y5TABC** Large 40 inches long  
**Y3TABC** Medium 40 inches long  
**Y5TABC4** Large With Wheels  
**Y3TABC4** Medium With Wheels

**NEW!** Available in cypress.



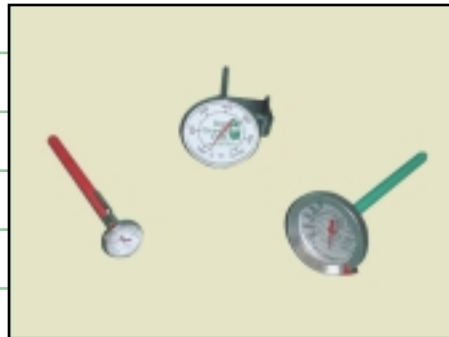
## Spring Assisted Band

**SABL** Large egg  
**SABM** Medium Egg  
 (Small Egg N/A)  
 (Mini Egg N/A)



## Dual Function Dampers

Daisy Wheel & Slide Action  
**DFMT** LG/MD Metal Top  
**DFMTS** Small Metal Top  
 (Mini Egg N/A)



## Thermometers

**TP** Meat Gauge Instant  
**MP** External Precision 750F  
**M** Meat Gauge Standard



## Ash Rakes/Grill Gripper

**AT** Ash tool for cleaning  
 Large & Medium Egg  
**AS** Ash tool for Small Egg  
**GG** Grill Gripper



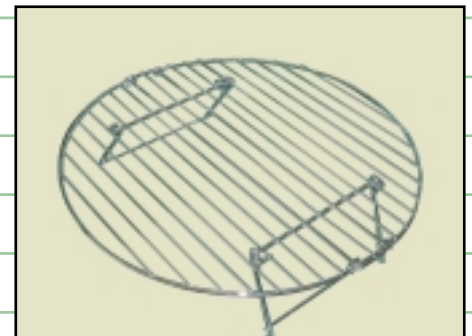
## Electric Fire Starter

**HL** Electric 500 Watt  
 used to start BGE lump charcoal in minutes. Uses 110 volts.



## Natural Fire Starters

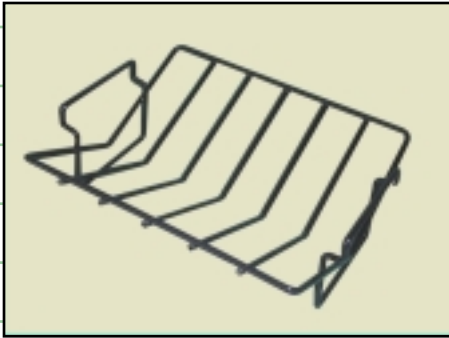
**F524** Comes 24 to a pack.  
 All natural wood fire starters for igniting BGE lump charcoal in minutes.



## Grill Extender

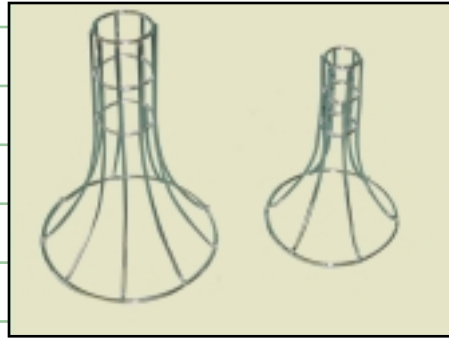
**GX** Creates a second grill shelf.  
 Doubles the cooking capacity of The Big Green Egg® For large and medium Egg.

# EGG-CESSORIES



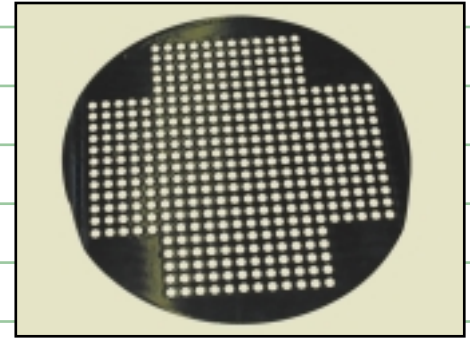
## V-Rack

**VRP** Rib rack & Roast Rack  
(Porcelain Coated)  
Holds ribs, chops and meats on  
end. No need for turning.



## Vertical Roasters

**VTR** Turkey Roaster  
**VCR** Chicken Roaster  
Holds poultry upright for perfect  
smoking results.



## Fish & Veggie Grids

**16PH** Porcelain coated 16"  
**CEO951** Stainless Steel 12"  
Perfect for vegetables, fish, shrimp or  
any foods too small for regular grate.



## Drip Pans & Seasoning

**13NSP** 13 x 9 Non Stick  
**9R** Round 9" Diameter  
**MM** BGE All Purpose 5.5 OZ  
**MML** BGE All Purpose 16 OZ



## Baking Stones

**BS** 14" Flats-Fits Large Egg  
**BS12** 12" Flat-Fits Medium  
Great for pizzas, bread,  
pastry or desserts



## Plate Setter

**PS** For Large egg  
**PS12** For Medium Egg  
Raised Cooking Surface. A must  
for indirect cooking.



## Grill Covers

**5VCA** Fits Lg/Md with Autolock  
**5VC** Fits Lg/Md with Standard  
**3VC** Fits Small Egg with Nest  
**5TC** Fits 58" Table with Egg  
**3TC** Fits 40" Table with Egg



## Wood Chips

**Apple - Cherry - Pecan**  
**Sugar Maple - Mesquite**  
**Jack Daniels - Alder**  
**Vintage Barrel - Hickory**



## Natural Lump Charcoal

**CP** Big Green Egg Natural  
Lump charcoal.  
Made from hard woods, no  
additives, all natural. (20 LB Bag)

# PARTS & EGG-CESSORIES



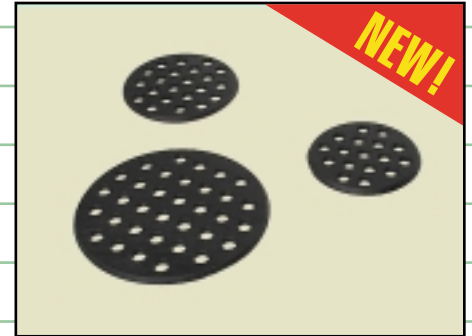
## Fire Boxes

- LFB** Fire Box Large
- MFB** Fire Box Medium
- SFB** Fire Box Small
- TFB** Fire Box Mini



## Fire Ring

- LFR** Fire Ring Large
- MFR** Fire Ring Medium
- SFR** Fire Ring Small
- TFR** Fire Ring Mini



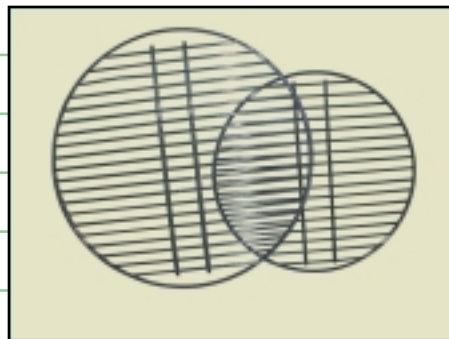
## Fire Grates

- LFGC** Fire Grate Large
- MFGC** Fire Grate Medium
- SFGC** Fire Grate Small
- TFGC** Fire Grate Mini



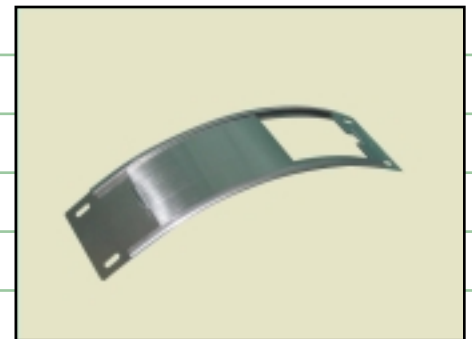
## Gasket Replacement

- GKHD-L** Large egg
  - GKHD-M** Medium Egg & Small
- Adhesive backed for easy installation.



## Porcelain Coated

- 18P** Large Egg
- 15P** Medium Egg
- 13P** Small Egg
- 9P** Mini Egg



## Stainless Steel Draft Doors

- SSD** Large/Medium Egg
  - ISSD** Small Egg
- Stainless Steel for a lifetime of service.



## BGE Video

- VIDEO 1**  
Cooking tips, cooking instructions, Egg maintenance.
- VIDEO 2**  
More cooking ideas - filmed at the Atlanta Eggtoberfest.



## BGE Cookbook

- CB** 200 pages  
Tons of recipes, cooking instructions, assembly instructions, warranty info and "Frequently Asked Questions."



## Promotional Items

- KOZY** Koozies-BGE Logo
- CAP** Stone Washed

# BIG GREEN EGG FEATURES

- **EFFICIENT** – The Heavy Duty Big Green Egg is made of modern heat holding ceramics. Its ceramic walls are heavy and thick. This insulating quality cooks foods with an amazingly small consumption of charcoal. A 20 LB bag of natural charcoal will usually provide 2-3 months use, even if you cook out several times per week. When you are through cooking, just close the lid and the top and bottom drafts. This extinguishes the fire. You can reuse about 80% of the charcoal. This feature alone will pay for your Big Green Egg in a short time.
- **EASY TEMPERATURE CONTROL** – By adjusting the dampers, you can attain a temperature accuracy within two degrees. You have total control. You can do your grilling, barbecuing, smoking, and baking at exactly the temperatures you need. The heat gauge will give precise readings of temperature, from 0 to 750 degrees. We have included a cookbook with recipes and easy instructions. You'll get great results from the start.
- **THE WORLD'S BEST SMOKER** – Smoking is done at lower temperatures, usually between 150 degrees and 250 degrees. Add some moistened wood chips to the glowing charcoal for flavor. Your Egg gives you control of the degree of smoked flavor. You can have just a hint of smoke, or have your meats smoked through to the bone. With the Big Green Egg you can smoke foods exactly the way you like them.
- **EASY TO START** – Starting is quick without starter fluid, and regardless of wind conditions. The air flow works like a fireplace. The Big Green Egg will be at operating temperature and ready to use in less than fifteen minutes. You can use an electric lighter or firestarter for even greater convenience.
- **A COMPLETE OUTDOOR COOKER** – The BGE is a smoker, a grill, and an oven. You can do an entire meal at once by including your veggies. Corn, potatoes, mushrooms, onions, etc. are superb! There are even deserts you can enjoy from the Egg. The cookbook has many more suggestions.
- **MOISTURE RETENTION** – The Big Green Egg ceramics hold heat and moisture extremely well. For this reason, foods do not dry out, as in metal charcoal, gas, or electric grills. Natural juices and flavors enhance the taste. The BGE operates without the need for water or endless hours of tending. Meats and other foods are juicier, with little or no shrinkage.
- **SAFER TO USE** – The Big Green Egg is safer to use because the ceramic does not become as hot on the surface as a metal cooker. Also, it keeps the fire enclosed within a small area. This protection is **most** important around small children.
- **NATURAL FLAVORS** – The ceramic Big Green Egg gives a natural and wholesome flavor to all your foods. There is no metallic taste. When baking, you'll get a "brick-oven" flavor and crust. Bake a bread or a Pizza in your Big Green Egg and see for yourself.
- **YEAR-AROUND USAGE** – You can use The Big Green Egg in all climates. Rain and snow can not harm it. It is suitable for all year use, even in freezing temperatures. The BGE can be priceless in emergencies.
- **EASY CLEAN UP** – The exterior has a lifetime glaze, which maintains its good looks and easily wipes clean. Inside, the heat will burn off the grease from the ceramics like a self-cleaning oven. The porcelain coated grill wipes clean. You'll have less ash remaining when your done.





Big Green Egg®

3414 Clairmont Road  
Atlanta, GA 30319

404-321-4658

FAX: 404-321-0330  
sales@biggreenegg.com  
www.BigGreenEgg.com